



TransEra

History of TransEra

- For over two decades the privately held TransEra Corporation has been a developer and manufacturer of hardware, software, and engineering products.
- Established in Provo, Utah in the mid-1970's, TransEra's cofounders, both engineers, focused on providing unique solutions to the scientific marketplace.

1976

- TransEra Incorporates




Diverse line of Products

- TransEra has pioneered a diverse line of products over the years, beginning with a full line of Tektronix 4050 Workstation peripherals and add-on PC hardware and software.
- These popular peripherals merged software programming skills, hardware expertise, scientific instrumentation, and specialized cross-platform development.

1988

- HTBasic introduced. The first time that “Rocky Mountain BASIC” runs on a PC

Feed this to your PC
and it'll think it's an
HP BASIC workstation.



Finally, there's a way for serious technical computer users to get the power and features of HP BASIC on a PC. The answer is HTBasic, a real engineering BASIC that turns your PC into an HP9000 series 200/900 BASIC workstation — at a fraction of the cost.

Like HP's Rocky Mountain BASIC, HTBasic from TransEra is a state-of-the-art BASIC that gives you all the capabilities you need for complex engineering applications. Plus you get important advanced features you won't find with any other PC BASIC. Like the complete set of HP graphic commands. Integrated HTB/G/IB syntax for intelligent instrument control. The advanced I/O Path System. And built-in matrix math.

In fact, all the optional HP libraries are built in. There's nothing else to load. You even get the full screen program editing and debugging environment.

Discover the new solution for cost-effective technical workstations. HTBasic from TransEra.

FREE DEMO DISKETTE
For more information and a demo diskette, write TransEra Corporation, 2707 South Canyon Road, Denver, CO 80201. (303) 424-6550.

HTBasic
CORPORATION

1989

- TransEra develops an advanced home automation lighting control system



Creative Research & Development

- Today, TransEra markets a diverse line of products. In addition to HTBasic, products are also being sold in residential and commercial building markets.
- Even after twenty years of growth, almost half of TransEra's employees are hardware or software engineers, a continuing commitment to the TransEra customer.
- Technology, innovation and dedication to creative research and development is the cornerstone to TransEra's longevity and success.

1995

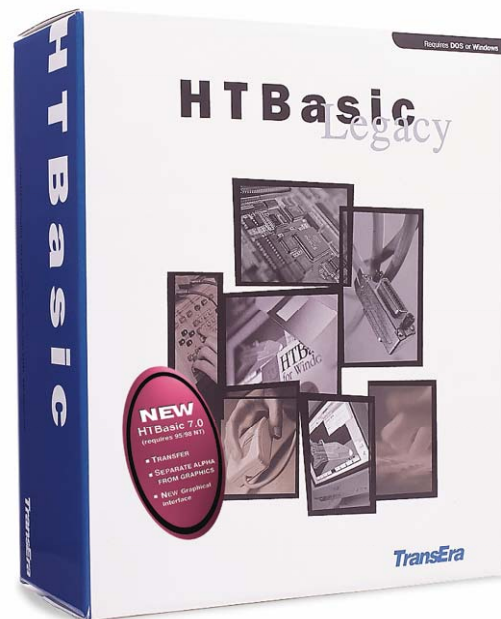
- HTBasic for Windows first introduced



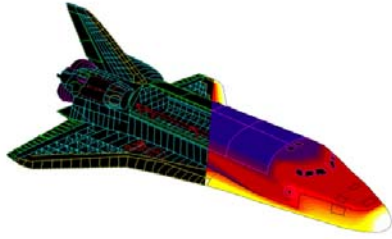
- Hewlett Packard licensed HTBasic for Windows from TransEra as "HP BASIC for Windows".
 - Both HTBasic for Windows and HP BASIC for Windows were exactly the same product.

1998

- HTBasic Legacy released, bringing together the DOS and Windows versions of HTBasic into a single package



TransEra



Present Day

- 2002 - HTBasic Version 9.0 released. HTBasic Workshop combined with Full Development Version
- 2006 - HTBasic Version 9.4 Released





Present Day (cont)

- 2006 – Vantage Controls (TransEra's Home Automation Company) releases InFusion Home Automation System



Future

- Regular HTBasic Maintenance Releases
- New Improved Website
- New FAQ and Knowledgebase

