

Appendix 2: Menu Tables HTBasic 8.0 におけるメニューに関し、以下要約します。
Menu Tables

1. File Menu (ファイル・メニュー)



Figure 2 Application Window

File Menu (Application Window)		
Menu Item	Description	Alt
New	Opens a new Program Window	Alt+F+N
Open...	Allows user to open a new file	Alt+F+O
Run Program...	Allows user to run a program from a file	Alt+F+R
Recent File List 1...16	Allows opening one of up to sixteen recently opened files	Alt+F+1...16
Change MSI on open	Allows user to change Mass Storage Is location on opening a new file from the Recent File List. This is not set by default.	Alt+F+h
Reset File List...	Allows user to clear most recenty opened files list	Alt+F+L
Exit	Exit the application	Alt+F+x

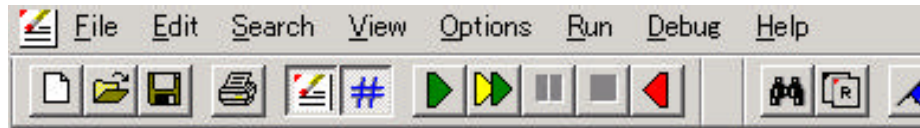
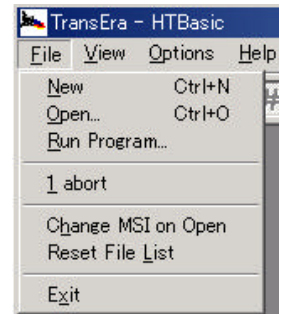
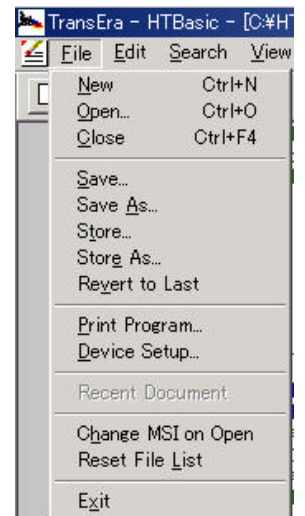


Figure 3 Program Window

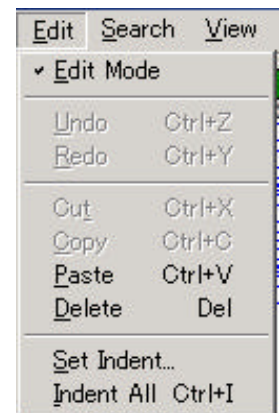
File Menu (Program Window)		
Menu Item	Description	Alt
New	Greyed out - inactive	Alt+F+N
Open...	Opens the Open File Dialog box	Alt+F+O
Close	Closes the Program Window	Alt+F+C
Save	Saves program to existing file	Alt+F+S
Save As...	Saves program to a user-specified file	Alt+F+A
Store	Stores program to existing file	Alt+F+t
Store As...	Stores program to a user-specified file	Alt+F+e
Revert to last	Reverts program to previously saved version	Alt+F+v
Print Program	Allows current document to be printed	Alt+F+P
Device Setup	Allows user to add,remove,or change devices	Alt+F+D
Recent File List 1...16	Allows opening one of up to sixteen recenty opened files	Alt+F+1...16



Change MSI on open	Allows user to change Mass Storage Is location on opening a new file from the Recent File List, above. This is not set by default.	Alt+F+h
Reset File List	Allows user to clear most recently opened files list	Alt+F+L
Exit	Exit the application	Alt+F+x

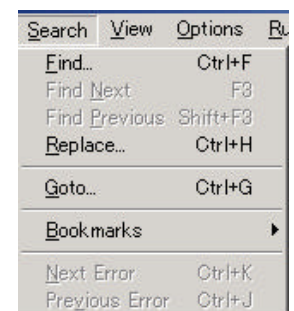
2. Edit Menu (エディット・メニュー)

Edit Menu (Program Window)		
Menu Item	Description	Alt
Edit Mode	Allows user to move programs into Edit Mode	Alt+E+E
Undo Ctrl+Z	Allows user to Undo their immediately previous action	Alt+E+U
Redo Ctrl+Y	Allows user to Redo their immediately previous Undo action	Alt+E+R
Cut Ctrl+X	Allows user to Cut selected text from program to clipboard	Alt+E+t
Copy Ctrl+C	Allows user to Copy selected text from program to clipboard	Alt+E+C
Paste Ctrl+V	Allows user to Paste selected text from clipboard to program	Alt+E+P
Delete Del	Allows user to Delete selected text from program	Alt+E+D
Set Indent...	Displays the Set Indent Dialog Box to determine Indent limits	Alt+E+S
Indent All Ctrl+I	Allows user to Indent all appropriate lines in the program	Alt+E+I



3. Search Menu (サーチ・メニュー)

Search Menu (Program Window)		
Menu Item	Description	Alt
Find Ctrl+F	Allows the user to Find a selected string	Alt+S+F
Find Next F3	Allows user to Find the Next occurrence of a selected string	Alt+S+N
Find Previous Shift+F3	Allows user to Find the Previous occurrence of a selected string	Alt+S+P
Replace	Allows users to define search and Replace options	Alt+S+R
Goto...	Allows user to Go to a line, label, function or a subprogram	Alt+S+G



3'. Bookmark Menu (ブックマーク・メニュー)

(注) Search Menu のサブメニューです

Bookmarks Menu (Program Window)		
Menu Item	Description	Alt
Add Bookmark Ctrl+F6	Allows user to add a bookmark.	Alt+B+A
Previous Bookmark Ctrl+Shift+F7	Allows user to return to the previous bookmark.	Alt+B+r
Next Bookmark Ctrl+F7	Allows user to move to the next bookmarks	Alt+B+e
Remove All Bookmarks	Allows user to remove all bookmarks.	Alt+B+v
Previous Error	Allows user to move to the previous error	Alt+B+P Alt+B+N
Next Error	Allows user to move to the next error	

