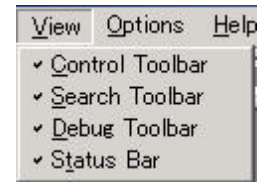


4. View Menu (ビュー・メニュー)

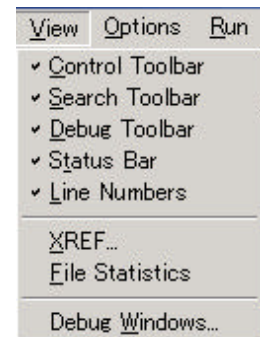
(注) Application Window (Figure 2 参照)

| View Menu (Application Window) | | |
|--------------------------------|--|---------|
| Menu Item | Description | Alt |
| Control Toolbar | When checked, displays the control toolbar | Alt+V+C |
| Search Toolbar | When checked, displays the Search toolbar | Alt+V+B |
| Debug Toolbar | When checked, displays the debug toolbar | Alt+V+D |
| Status Bar | When checked, displays the status bar | Alt+V+S |



(注) Program Window (Figure 3 参照)

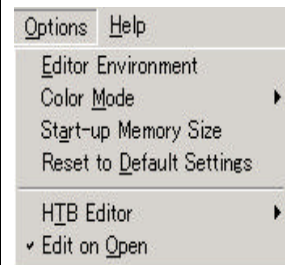
| View Menu (Program Window) | | |
|--------------------------------|--|---------|
| Menu Item | Description | Alt |
| Control Toolbar | When checked, displays the control toolbar | Alt+V+C |
| Search Toolbar | When checked, displays the Search toolbar | Alt+V+B |
| Debug Toolbar | When checked, displays the debug toolbar | Alt+V+D |
| Status Bar | When checked, displays the status bar | Alt+V+S |
| Line Numbers | When checked, displays line numbers within the program | Alt+V+L |
| XREF | Allows user to set cross-reference list | Alt+V+X |
| File Statistics | Displays file statistics for open program including total line #s, memory (used&free), # of subs, and # functions. | Alt+V+F |
| Debug <u>Windows</u> | Displays the Debug Window Dialog Box so user may select which debug windows to display | Alt+V+W |



5. Option Menu (オプション・メニュー)

(注) Application Window (Figure 2 参照)

| Options Menu (Application Window) | | |
|-------------------------------------|--|---------|
| Menu Item | Description | Alt |
| Editor Environment | Displays Editor Environment Dialog Box. | Alt+O+E |
| Color Mode | Allows user to set color mode from 256 colors or 16 colors | Alt+O+M |
| Startup Memory Size | Allows user to set Startup memory size from 1 to 256 Mbytes | Alt+O+a |
| Reset to Default settings | Allows user to reset all option menu items to default | Alt+O+D |
| HTB Editor | Allows user to select Legacy or Windows editor(default)on start up | Alt+O+T |
| Edit on Open | When checked, opens new file in Edit Mode | Alt+O+d |



(注) Program Window (Figure 3 参照)

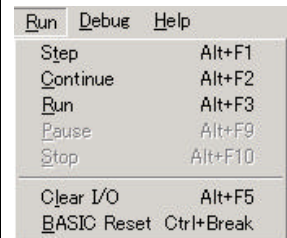
| Options Menu (Program Window) | | |
|-------------------------------|---|---------|
| Menu Item | Description | Alt |
| Editor Environment | Displays the Edit Environment Dialog Box so user may set the edit environment | Alt+O+E |
| Run Environment | Displays the Configure Dialog Box so user may set the run environment | Alt+O+R |
| Change MSI | Allows user to change Mass Storage Is location | Alt+O+h |
| Alt Key Behavior | Allows user to set alt key behavior to Windows (default) or HTBasic | Alt+O+A |
| HTB Editor | Allows user to select Legacy or Windows Editor (default) on start up | Alt+O+T |
| Edit on Open | When checked (by default), opens new program in Edit Mode | Alt+O+d |



6. Run Menu (ラン-実行-メニュー)

(注) Program Window のみ (Figure 3 参照)

| Run Menu (Program Window) | | |
|----------------------------------|---|---------|
| Menu Item | Description | Alt |
| Step Alt+F1 | Allows user to run program in Step mode | Alt+R+t |
| Continue Alt+F2 | Continues a paused program (pause and stop mode only) | Alt+R+C |
| Run Alt+F3 | Runs an active program | Alt+R+R |
| Stop Alt+F10 | Stops a running program (run mode only) | Alt+R+S |
| Pause Alt+F4 | Pauses a running program (run mode only) | Alt+R+P |
| Clear I/O Alt+F5 | Aborts an I/O operation that is in progress | Alt+R+l |
| BASIC Reset Ctrl+Break | Performs BASIC reset | Alt+R+B |



7. Debug Menu (デバッグ・メニュー)

(注) Program Window のみ (Figure 3参照)

| Debug Menu (Program Window) | | |
|----------------------------------|--|---------|
| Menu Item | Description | Alt |
| Run Debugger Ctrl+F3 | Allows user to run program with debugger active | Alt+D+R |
| Add Watch Variable | Allows user to add variable(s) to Watch Window | Alt+D+W |
| Remove Watch Variable | Allows user to remove variable(s) from Watch Window | - |
| Remove All Watch | Allows user to remove all variables from Watch Window | Alt+D+h |
| Add Breakpoint Ctrl+F9 | Allows user to add a breakpoint | Alt+D+B |
| Conditional Breakpoint | Allows user to establish a conditional breakpoint | Alt+D+C |
| Global Breakpoint | Allows user to establish a global breakpoint | Alt+D+G |
| Remove All Breakpoints | Allows user to remove all breakpoints | Alt+D+l |
| Step Over Ctrl+F2 | Allows user to step over a line in step mode execution | Alt+D+S |
| Step Into Ctrl+F1 | Allows user to step into a line in step mode execution | Alt+D+I |
| Step Out Ctrl+Shift+F1 | Allows user to step out of a line in step mode execution | Alt+D+O |
| Run To Cursor | Allows user to run program from beginning to cursor | Alt+D+T |
| Run From Cursor | Allows user to run program from cursor to end | Alt+D+u |
| Refresh Windows | Refreshes all displayed windows | Alt+D+f |
| Close All Debug Windows | Allows user to close all active debug windows | Alt+D+A |
| Remove All Debug Info | Allows user to erase all debug info | Alt+D+D |

| Debug | Help |
|----------------------------|---------------|
| Run Debugger | Ctrl+F3 |
| Continue Debugger | Ctrl+F2 |
| Add Watch Variable... | Ctrl+W |
| Remove Watch Variable | |
| Remove All Watch Variables | |
| Toggle Breakpoint | Ctrl+F11 |
| Conditional Breakpoint... | |
| Global Breakpoint... | |
| Remove All Breakpoints | |
| Step Into | Ctrl+F7 |
| Step Over | Ctrl+F8 |
| Step Out | Ctrl+Shift+F7 |
| Run to Cursor | Ctrl+F5 |
| Continue from Cursor | Ctrl+Shift+F5 |
| Refresh Windows | |
| Close All Debug Windows | |
| Remove All Debug Info | |

8. Help Menu (ヘルプ・メニュー)

| Help Menu (Both Application and Program Windows) | | |
|--|--|---------|
| Menu Item | Description | Alt |
| Help Topics | Displays HTBasic for Windows Help | Alt+H+T |
| Contents & Index | Displays HTBasic Contents& Index tab | Alt+H+I |
| Using Help... | Displays Windows Help Contents Tab | Alt+H+U |
| About HTBasic | Displays HTBasic for Windows Information | Alt+H+A |

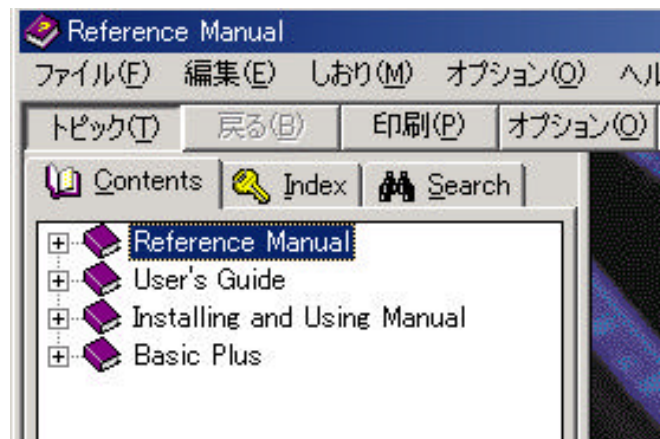
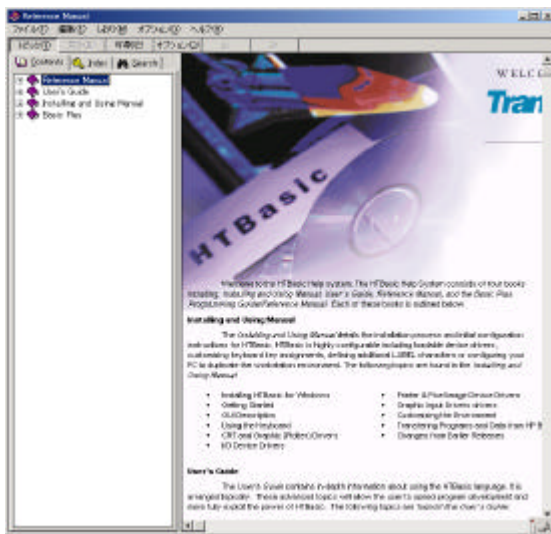
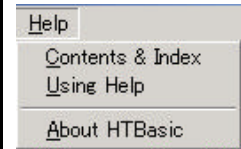


Figure 4. HTBasic 8.0 Help

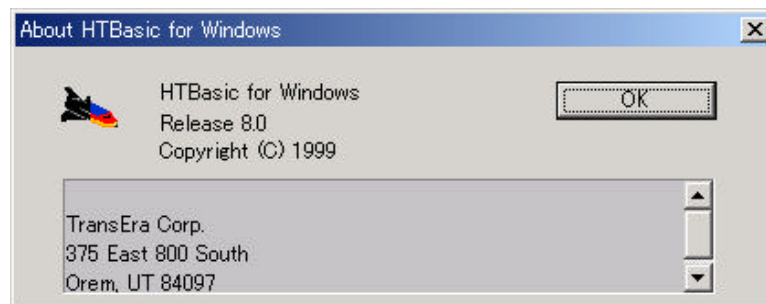


Figure 5. HTBasic のバージョン