

CMB-24

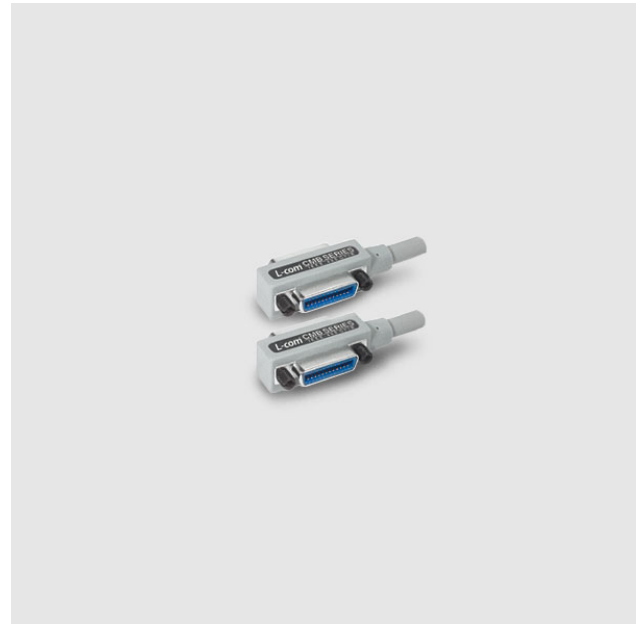
► Molded Grade IEEE-488 GPIB Cable

Features

- Economy Cabling Solution
- Stackable Connectors at both ends
- Double Shielded with Molded Backshells
- Available 0.5m...8m length

Description

The CMB series IEEE-488 GPIB cables provides best pricing for your IEEE-488 GPIB wiring requirements. The shielding offered by these cables is adequate for many applications. Featuring all-molded connector ends which contribute to long life expectancy, and are impervious to breakage at the point where the cable enters the connector housing. Considerable savings can be realized using this cable, particularly in volume applications.



Specifications

Makeup

Cable: 4 Inner Twisted Pairs, 8 Outer Twisted Pairs, Mylar Shield, Drain Wire, Braid Shield, PVC Outer Cover

Connector: Cast Metal Nickel Plated Connector, Fully Molded

Conformance: STD IEEE-488

Ordering Information _____

CMB24-0M5 - CMB24 0.5 meter length

CMB24-1M - CMB24 1 meter length

CMB24-2M - CMB24 2 meter length

CMB24-3M - CMB24 3 meter length

CMB24-4M - CMB24 4 meter length

CMB24-5M - CMB24 5 meter length

CMB24-6M - CMB24 6 meter length

CMB24-8M - CMB24 8 meter length

On the Web _____

Click www.inesinc.com for more information and resources.



ines Test and Measurement GmbH & Co. KG
31542 Bad Nenndorf · DE (Germany)
Phone +49 5723 916 250
Fax +49 5723 916 252
Web www.inesinc.com

All specifications are subject to change without notice. Copyright © 2005. All rights reserved.